

Installation Instruction

Model: 34603
Input : AC220-240V
Power: 3x2W

CE

F

⊕

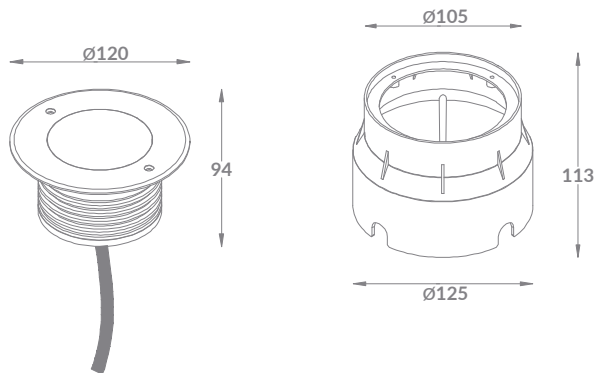
IP67

CREE

Safety Notice:

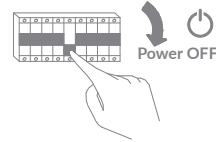
Please read the installation instruction before installing the inground.
The installation should be done by a professional.
Failure to comply with the instruction may result in damage, fire or personal injury.

1. While using the products please pay attention to the input voltage.
2. Please use our local standard identification cable. Pay attention that it must be higher than the input voltage and constant current of the product.
3. Please turn off the power before installing, repairing or replacing the inground.
4. If parts need to be replaced or repaired, please use the specified parts from the supplier. The changes should be applied by a professional.

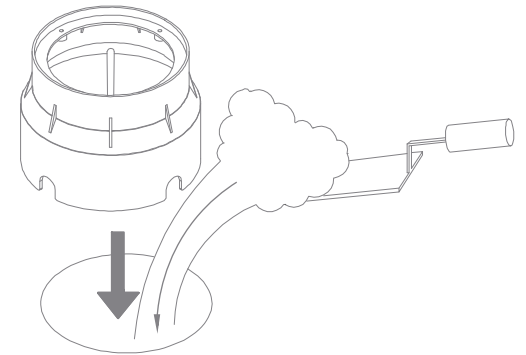


1

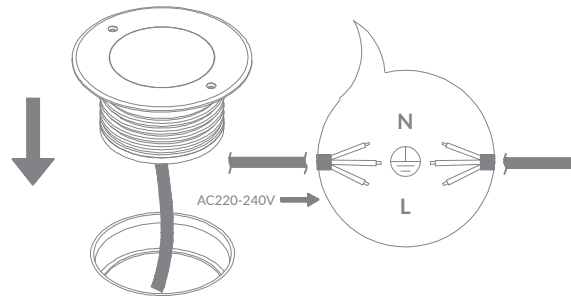
Ø105mm



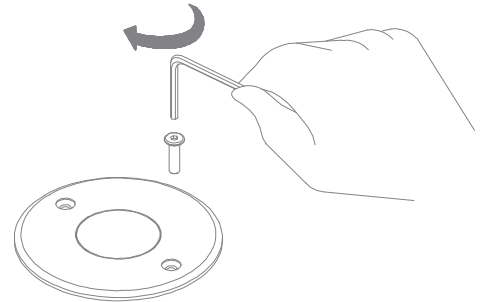
2



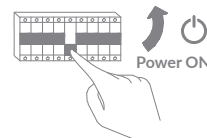
3



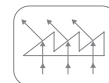
4



5



A-symmetrisch



gravel recommended!

